



XP 20 D Adjustable photocells

FAAC
Simply automatic.

XP 20 D

XP 20 D ADJUSTABLE PHOTOCELLS D TYPE DEVICE (EN 12453)

The new XP 20 D adjustable photocells comprise a transmitter and a modulated infra-red receiver with a range of up to 20 m. The obstruction of the light beam causes the receiver status to change.



SIMPLICITY AND VERSATILITY OF INSTALLATION

The new XP 20 D photocells, both wall-mounted and column-mounted, allow the mechanical reduction of the beam along the horizontal axis of 180° (-90° +90°) and feature a vertical optical self-alignment function which is particularly useful when the area to protect is not entirely flat.

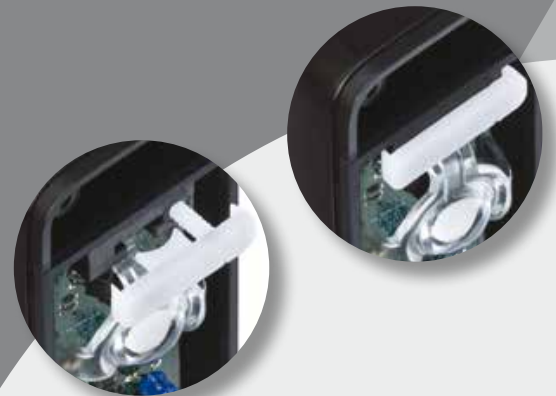
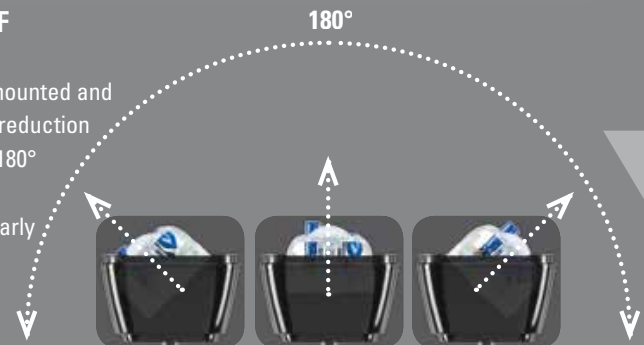
PERFECT IN ANY ARCHITECTURAL CONTEXT

Extremely compact size: 41 x 130 x 42 mm. Possibility of cable inlet both from the rear and from the underside of the casing (16 mm) and of column-mounting.

SUPERIOR PROTECTION

Mould seal on the casing, so there is no risk of it being removed or fitted incorrectly, thereby ensuring the IP54 protection class.

180°



ACCURATE AND RELIABLE ADJUSTMENT

The photocell is housed in a swivel support fitted with a high-performance lens designed to optimise the efficiency of the beam in any direction. The swivel support is locked in the desired position thanks to a hard-wearing quick-fit swivel lock (which can be removed with a screwdriver where necessary).



THREE VERSIONS TO ACCOMMODATE ALL REQUIREMENTS



XP 20 D

System with traditional 24V transmitter and receiver power supply.



XP 20B D

System with BUS **2easy** power supply, just two 24V non-polarized wires, possibility of installing up to 16 pairs of photocells on the same system and protection from interference produced by external light sources (such as vehicle LED headlights).



XP 20W D

System with traditional 12/24V receiver power supply and traditional or battery-operated transmitter power supply. It avoids having to lay a cable to the transmitter (battery) and features selectable channels which allows the installation of up to 4 pairs of photocells and protection from interference produced by external light sources (such as vehicle LED headlights).



TECHNICAL SPECIFICATIONS	XP 20 D	XP 20B D	XP 20W D
Power supply voltage	24V $\overline{\overline{\overline{\quad}}}$ / 24V~	via BUS 2easy, two 24V non-polarized wires $\overline{\overline{\overline{\quad}}}$	Rx: 12-24V~ / V $\overline{\overline{\overline{\quad}}}$ Tx: 12-24V~ / $\overline{\overline{\overline{\quad}}}$ or battery-operated (3 VcR2 - not included)
Nominal range	20 m	20 m	20 m
Type of installation	wall-mounted	wall-mounted	wall-mounted
Dimensions (LxHxD)	41 x 130 x 42 mm	41 x 130 x 42 mm	41 x 130 x 42 mm
Horizontal adjustment angle	-90° +90°	-90° +90°	-90° +90°
Self-alignment angle	$\pm 7^\circ$ (20m) $\pm 13.5^\circ$ (5m)	$\pm 7^\circ$ (20m) $\pm 13.5^\circ$ (5m)	$\pm 7^\circ$ (20m) $\pm 13.5^\circ$ (5m)
Obstacle detection time	13ms	20ms	40ms
Absorbed current	Rx (30mA) + Tx (20mA)	Rx (10mA) + Tx (10mA)	Rx (30mA) + Tx (40mA battery-operated or 5mA at 24V $\overline{\overline{\overline{\quad}}}$)
Protection class	IP54	IP54	IP54
Max contact capacity	60VA/24V		
Operating room temperature	-20°C ÷ +55°C	-20°C ÷ +55°C	-20°C ÷ +55°C
		Possibility of installing up to 16 pairs of photocells on the same system	Possibility of installing up to 4 pairs of photocells on the same system