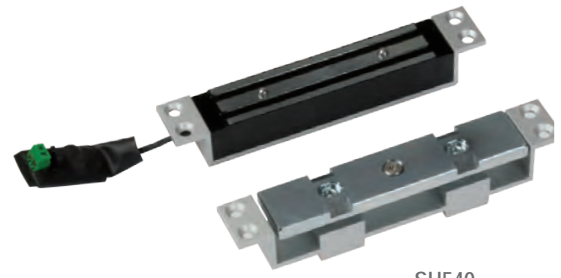


# VELMAG™ MORTISE ELECTROMAGNETIC LOCKS (SHEARLOCK)

## 540 DaN

- Mounting on single or double action door
- Horizontal or vertical installation
- Mortise or surface-mount (with SH540BT)
- Locked / unlocked status by HALL sensor (CTC model)



SH540

### CHARACTERISTICS

Dimensions		SH540 / SH540CTC	
H x W x D	Electromagnet	30 x 180 x 27,1 mm	
	Armature plate	30 x 180 x 33 mm	
	Housing	27 x 182 x 35,5 mm	
	U bracket	48 x 182 x 14 mm	
	12-24V DC		SH540 / SH540CTC 420-210 mA
	SH540 / SH540CTC -10 +60 °C		SH540 / SH540CTC 30V DC-3 A
	20		SH540 /SH540CTC 540*

\* Maximal theoretical holding forces, for an implementation meeting the optimum laying conditions

<b>SH540</b>	Shearlock electromagnetic lock 540 DaN 12-24V DC	1,2 kg
<b>SH540CTC</b>	Shearlock electromagnetic lock 540 DaN 12-24V DC + contact 10,2-27,6 VDC	1,2 kg
<b>SH540BT</b>	Surface housing for SH540 (2 pcs) with 4 spacers	0,5 kg
<b>SH540U</b>	U bracket for glass door for SH540BT - by pair Glass thickness : 14 mm max.	0,4 kg

Customs code  
83014019

SH540 / SH540CTC

