



# WIPC-301W

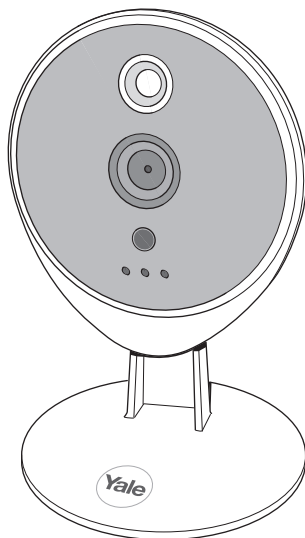
## Gebruikershandleiding

### Home View WiFi Camera

Indoor IP Camera

Indoor IP Kamera

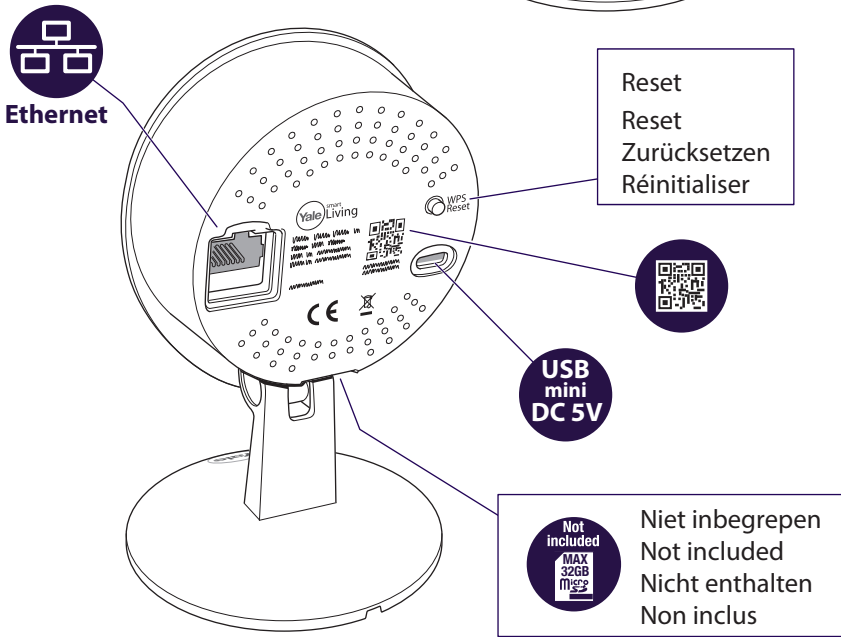
Caméra IP

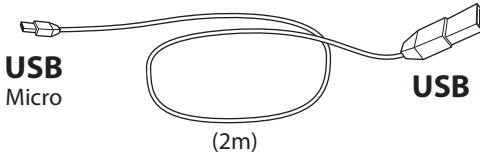
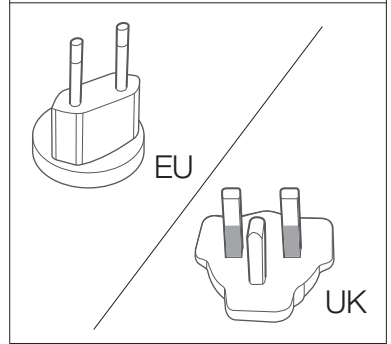
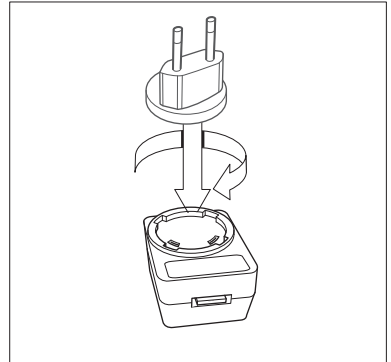
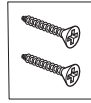
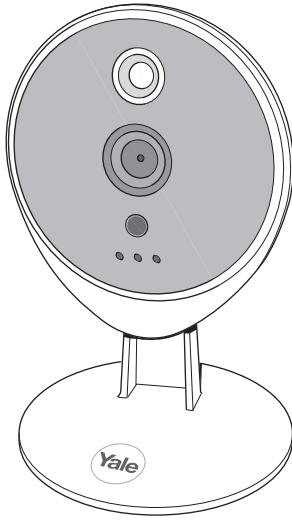


An ASSA ABLOY Group brand

ASSA ABLOY

The smarter way to protect your home.





USB  
Micro

USB

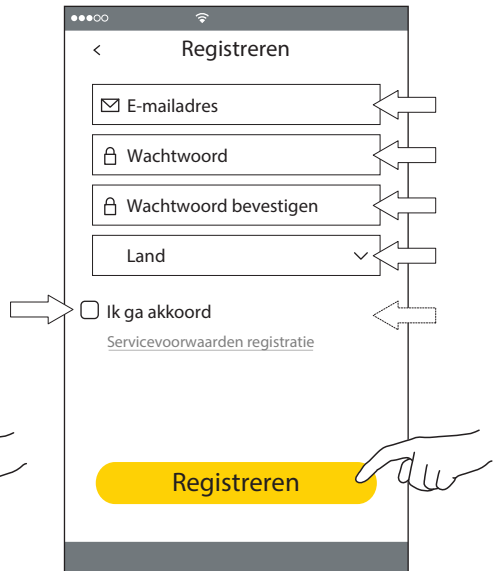
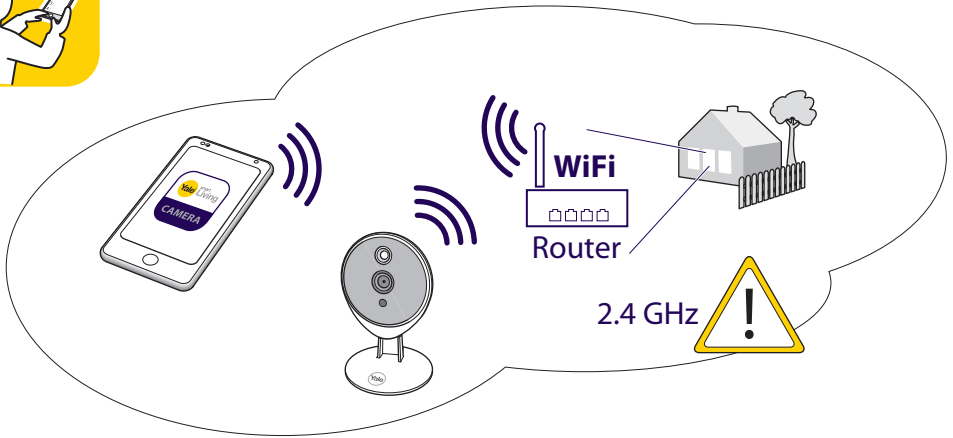
(2m)

1

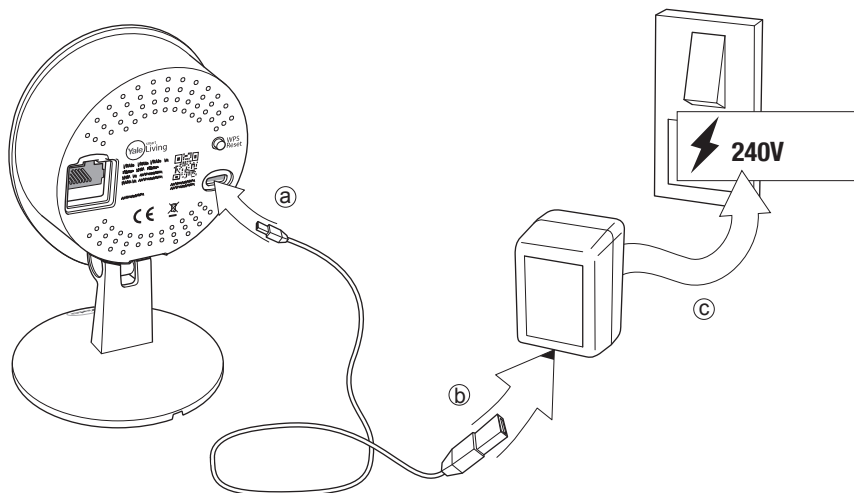
Yale Home View 



## 2 Account aanmaken



3



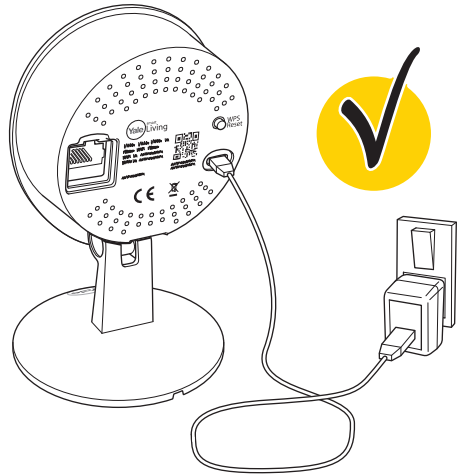
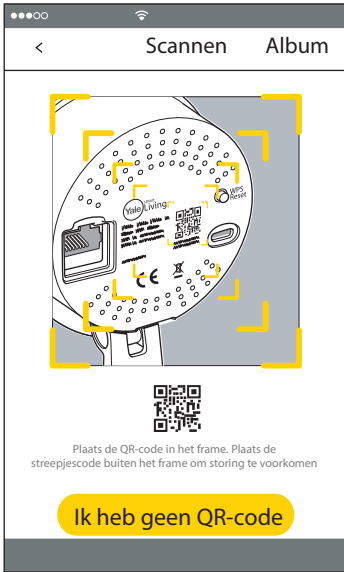
## 4 App - Camera instellen



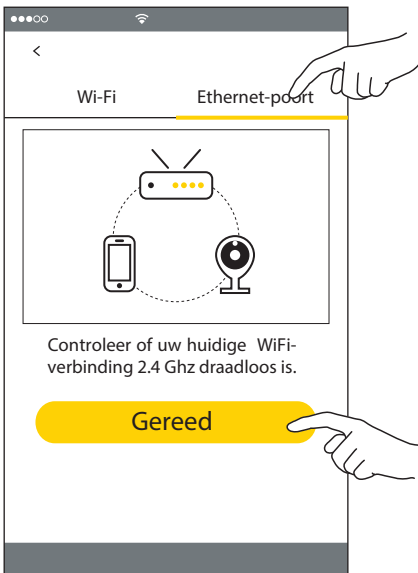
1



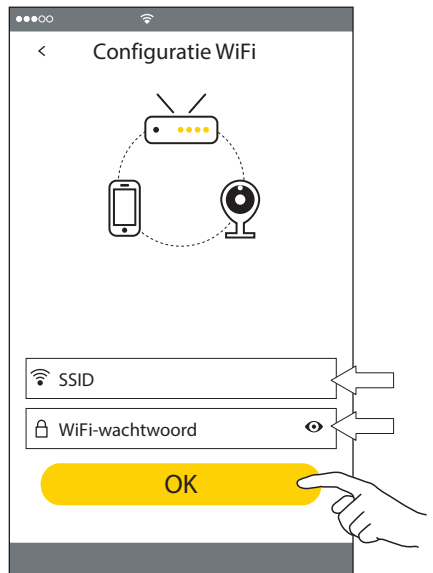
2



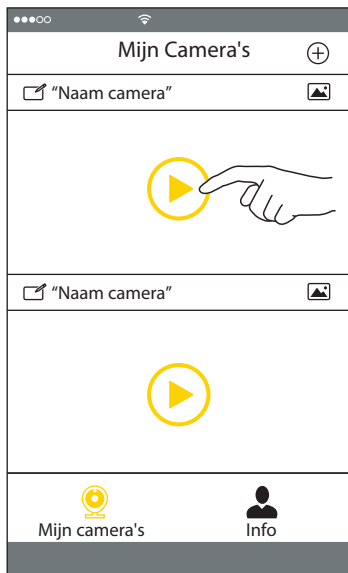
3



4



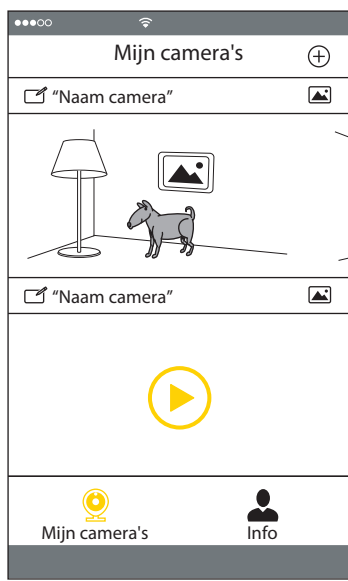
5



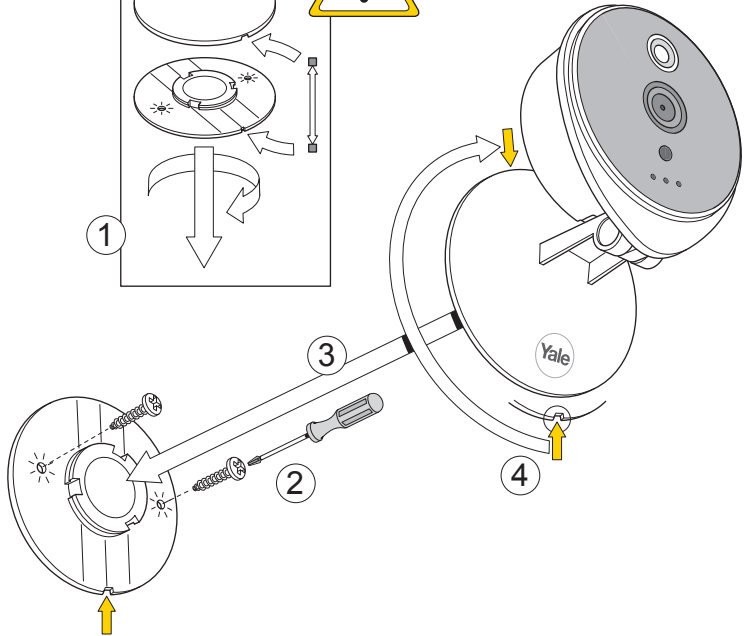
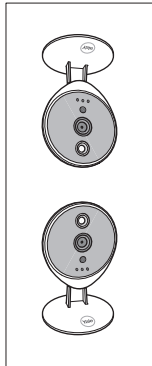
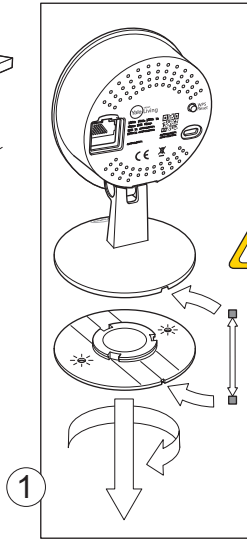
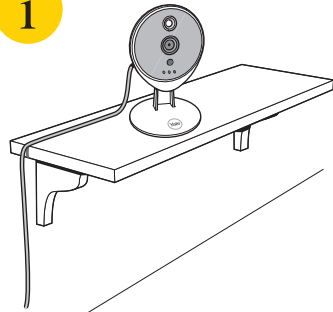
6



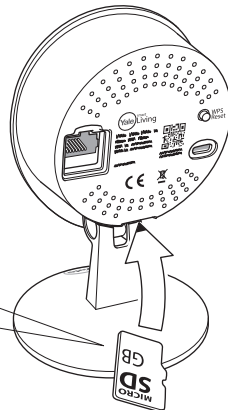
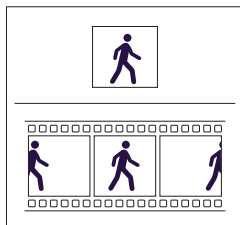
7



i



i



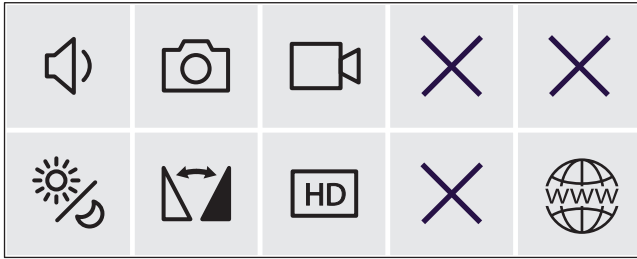
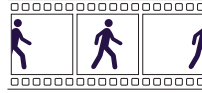




Foto



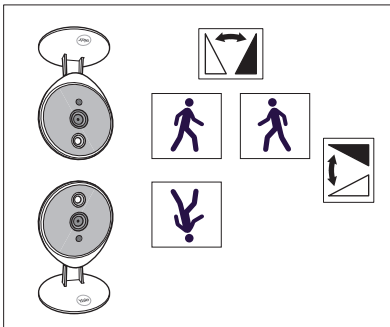
Video



[www.yalelock.nl/smartliving](http://www.yalelock.nl/smartliving)



Aan / Uit / Auto



i

**NL:**

Hierbij verklaard, ASSA ABLOY Ltd, School Street, Willenhall, West Midlands, Engeland Wv13 3PW dat de radio apparatuur type WIPC-301W conformeert aan de richtlijn 2014/53/EU. De volledige tekst van de EU Declaratie van Conformiteit is beschikbaar op het volgende internet adres: [www.yalelock.nl/doc](http://www.yalelock.nl/doc)

**GB:**

Hereby, ASSA ABLOY Ltd., School Street, Willenhall, West Midlands, England Wv13 3PW declares that the radio equipment type WIPC-301W is in compliance with Directive 2014/53/EU. The full text of the EU declaration of conformity is available at the following internet address: [www.yalelock.com/smart-living/doc](http://www.yalelock.com/smart-living/doc)

**FR:**

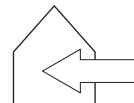
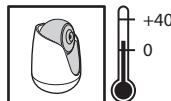
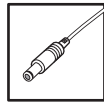
Le soussigné, ASSA ABLOY Ltd., School Street, Willenhall, West Midlands, England Wv13 3PW, déclare que l'équipement radioélectrique du type WIPC-301W est conforme à la directive 2014/53/UE. Le texte complet de la déclaration UE de conformité est disponible à l'adresse internet suivante: [www.yalelock.com/smart-living/doc](http://www.yalelock.com/smart-living/doc)

**... Message à destination des professionnels ...**

*Si vous souhaitez installer WIPC-301W dans votre société, vous devez obligatoirement demander une autorisation à la Commission Nationale de l'Informatique et des Libertés.*

**DE:**

Hiermit erklärt ASSA ABLOY Ltd., School Street, Willenhall, West Midlands, England Wv13 3PW, dass der Funkanlagentyp WIPC-301W der Richtlinie 2014/53/EU entspricht. Der vollständige Text der EU-Konformitätserklärung ist unter der folgenden Internetadresse verfügbar: [www.yalelock.com/smart-living/doc](http://www.yalelock.com/smart-living/doc)



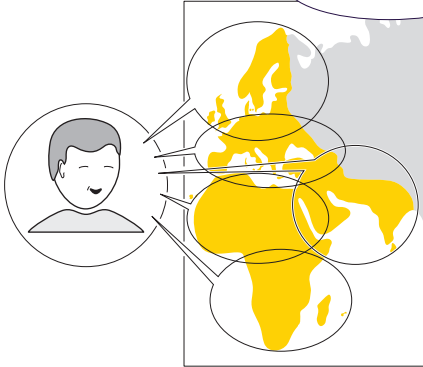




## Ondersteuning



tel nr 0900-4600470  
www.yalelock.nl/smartliving



**THE YALE BRAND**, with its unparalleled global reach and range of products, reassures more people in more countries than any other consumer locking solution.

**THE ASSA ABLOY GROUP** is the world's leading manufacturer and supplier of locking solutions, dedicated to satisfying end-user needs for security, safety and convenience.

An ASSAABLOY Group brand

**ASSA ABLOY**