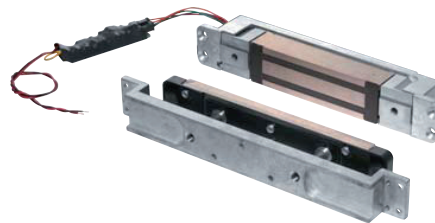




GF3000 Series Electromagnetic Locks

Schlage provides the most complete selection of electromagnetic locks in the industry. The GF3000 Series Shear Lock features a patented design offering advances over any Shear Lock on the market.

Unique mounting features provide a floating action of both the lock assembly and the armature. This design allows the magnet assembly to move towards the armature during the locking process. In this manner, the GF3000 is able to overcome gaps of up to 6mm without current inrush. Once engaged, the Shear Lock provides 1360kg holding force without high operating temperatures normally associated with other Shear Locks. A microprocessor-based control module provides advanced electronic features. This circuitry automatically senses and adjusts input voltage, allowing for operation from 12 to 24 volt DC power sources.

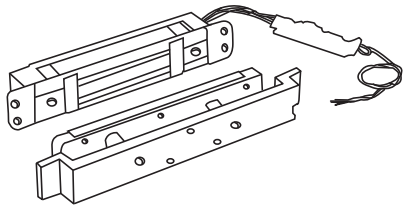


Pictured: GF3000

Performance Features

- Automatic voltage selection 12/24 VDC (filtered).
- Innovative gravity force design provides for movement of both lock and armature to overcome gaps of up to 6mm.
- 1360kg of holding force.
- Requires filtered, regulated power supply.
- Built-in Automatic Relock Switch.
- Adjustable time delay on re-lock, 0-30 seconds.
- Microprocessor controlled.
- Optional Magnetic Bond Sensor (MBS).
- Optional Door Status Monitor (DSM).
- Flexible mounting features allows for normal door & frame movement.
- Offers the advantage of a totally concealed locking mechanism, providing superior security and appearance.
- Patented design incorporates locking tabs on the magnet assembly with mating grooves in the armature plate.
- Ideally suited for commercial grade hollow metal doors and frames as well as herculite doors with top rail.
- Low operating temperatures makes this Shear Lock suitable for use in concealed locks in wood frames.

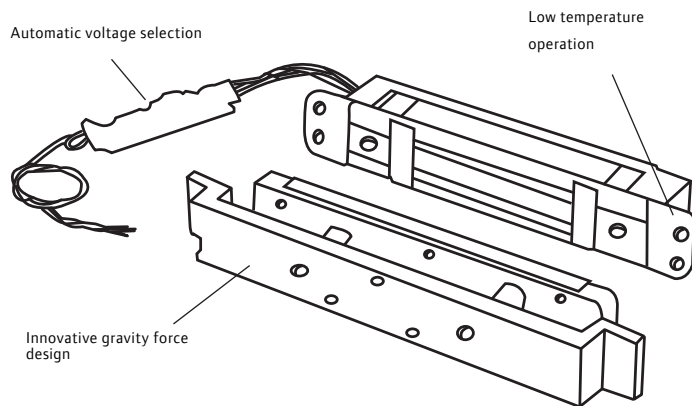
SCHLAGE GF3000 Series Electromagnetic Locks



Pictured: GF3000

Specifications	
Holding Force	1360kg
Input Voltage	Automatic Voltage Selection 12/24 VDC filtered
Current Draw	.90A@12VDC .45A@24VDC
Lock Body Size	38mm Height x 240mm Length x 38mm Depth
Lock Body Size with Mounting Tabs	38mm Height x 295mm Length x 38mm Depth
Armature Size	35mm Height x 215mm Length x 13mm Depth
Armature Bracket Size	35mm Height x 270mm Length x 25mm Depth
Weight	3.20kg

Features





GF3000 Series Electromagnetic Locks

Application Solution

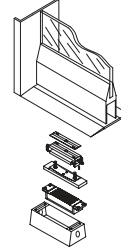
Mortice Mounted Series Shear Locks

GF3000BRD

For metal door and frame or glass door with bottom rail and metal frame.

The magnet is installed in the floor/threshold and the armature is installed in the bottom edge of the door. This application provides a solution when no top rail mounting is available.

Recommended mounting electronic module remote from locking mechanism.

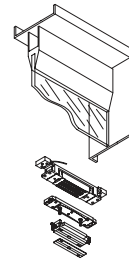


GF3000TRD

For metal door and frame or glass door with top rail and metal frame.

Recommended for zero clearance condition between top of door and ceiling.

Includes top rail door mounting assembly which provides armature adjustment from the latch edge of the door.

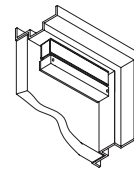


Surface Mounted Series Shear Locks

GF3000 SM

For metal door and frame, glass door with top rail and metal frame or wood door and frame.

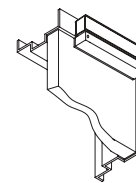
For out swinging door applications. Armature adjustment from top edge of the armature.



**Pictured: GF3000SM
(out-swinging)**

GF3000 TJ

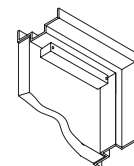
For metal door and frame, glass door with top rail and metal frame or wood door and frame. For in-swinging door applications. Unique design eliminates brackets with top jamb application. Armature adjustment from top edge of the armature.



**Pictured: GF3000TJ
(in-swinging)**

GF3000 SC

Semi-concealed model. Magnet is concealed in the frame and the armature assembly is surface mounted on the door. For metal door and frame, glass door with top rail and metal frame or wood door and metal frame. For out-swinging door applications. Unique design when Mortice top rail application is not available. Armature adjustment from top edge of the armature.



**Pictured: GF3000SC
(out-swinging
semi-concealed)**

GF3000 SC-HD

Semi-concealed model with Herculite door bracket. Magnet is concealed in the frame and the armature assembly is surface mounted on the door with a Herculite door bracket. This

