

Bluetooth Access Control (Android & iOS)



Introduction

Ksmart is a very user-friendly and convenient mobile APP for door access, which embedded with a Bluetooth module in the device. People can use it to open the door with their smartphone. There's no limit for device numbers bound in the APP. So you can manage your doors by an APP easily.

The mobile APP is totally offline, no need any network, which is simple and convenient when applying it. And it's compatible with both iOS (7.0 above) & Android (4.3) basing on Bluetooth version 4.0 above.

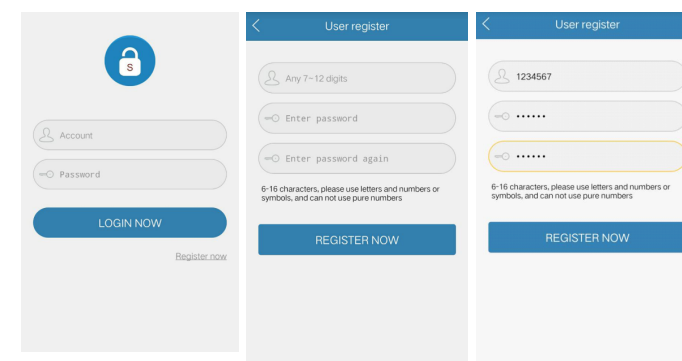
APP Operation

Here are just a few steps to get you started.
1) Make sure the Bluetooth on your mobile is turned on (you should see the little Bluetooth symbol at the top of your phone's screen. If you don't, go into the settings to enable it.)

2) Free download APP



1. Register (Once you register successfully, it will login automatically)
User account can be any 7-12 digits; because APP is based on offline, password cannot get back once it's lost. Please remember the password.
Note: This user account cannot login on other mobiles.



Pic. 1

Pic. 2

Pic. 3

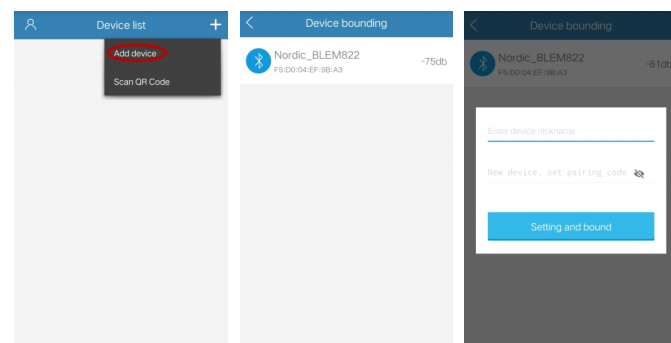
2. Add Device and Set Master

Note: The first user to bound the device is Master, and each device has only one Master.

Steps as below:

1. Click "+" on the right corner to add device (Pic. 4)
2. It will automatically search and get a list of available device, if no devices showed on device list, you can pull down to refresh. Then click device to bound device. (Pic. 5)
3. Input device nick name and set pairing code (can be any 6 digits only) (Pic. 6 & 7)
4. You will hear 2 beeps which means bound the device successfully. And it will return to device list automatically (Pic. 8)

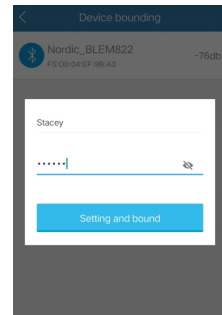
After adding device successfully, click the device to open the door.



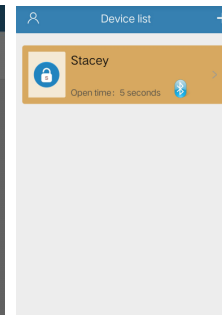
Pic. 4

Pic. 5

Pic. 6



Pic. 7



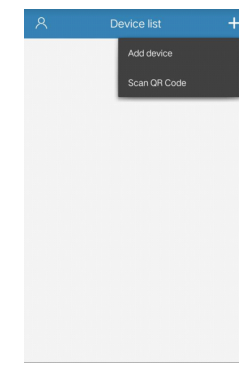
Pic. 8

3. Add Common Users

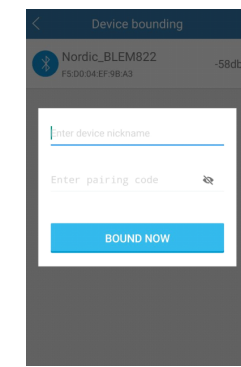
(Two methods to add common users)

Method 1

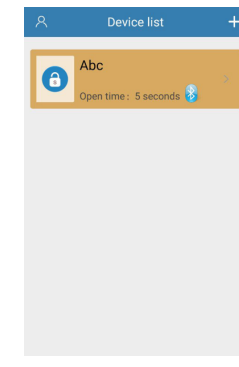
1. Click "+" on the right corner to add device (Pic. 9)
2. Input device nickname and pairing code (Ask the Master to provide the pairing code) (Pic. 10)
3. You will hear 2 beeps which means bound the device successfully. And it will return to device list automatically (Pic.11)



Pic. 9



Pic. 10

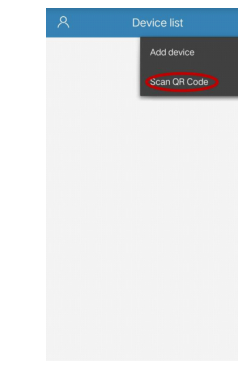


Pic. 11

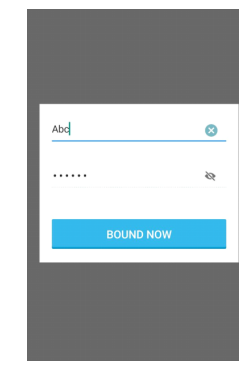
Method 2

Scan QR Code to add common users

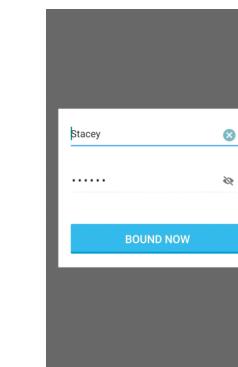
1. Click "+" to scan QR Code (Ask the Master to provide QR Code) (Pic. 12)
2. It will automatically show the device nick name and pairing code (default is invisible) (Pic. 13)
3. You can change the nick name or just keep it (Pic.14)
4. You will hear 2 beeps which means bound the device successfully. And it will return to device list automatically (Pic.15)



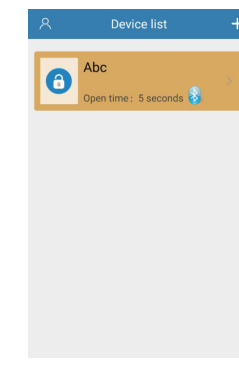
Pic. 12



Pic. 13



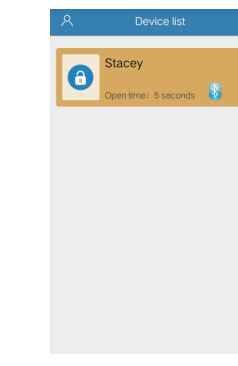
Pic. 14



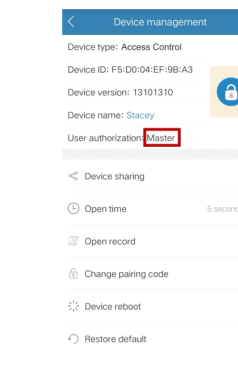
Pic. 15

4. Device Management (For Master Only)

Click ">" to the right to enter device management



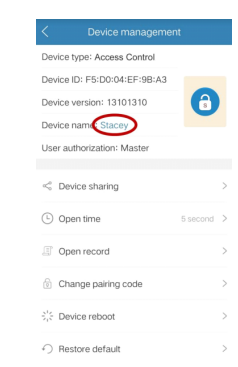
Pic. 16



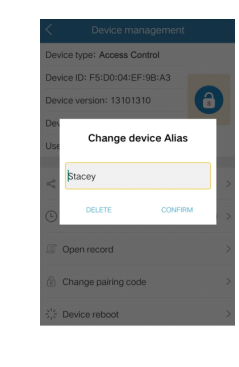
Pic. 17

4.1 Device Name

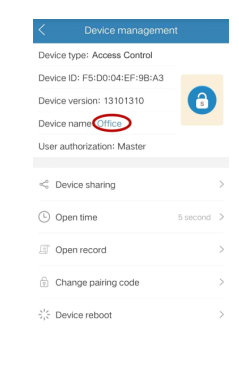
Device name can be changed



Pic. 18



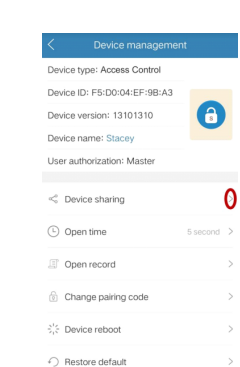
Pic. 19



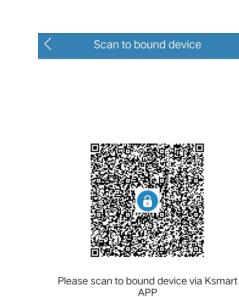
Pic. 20

4.2 Device Sharing

Click ">" to automatically generate a QR code



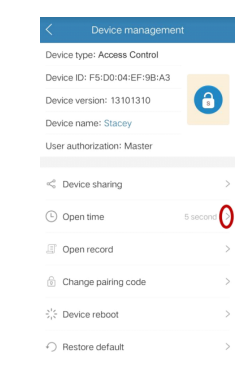
Pic. 21



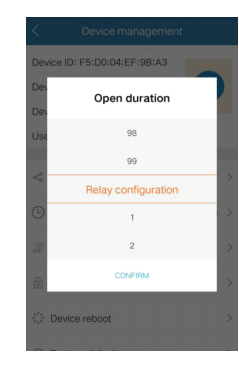
Pic. 22

4.3 Open Time

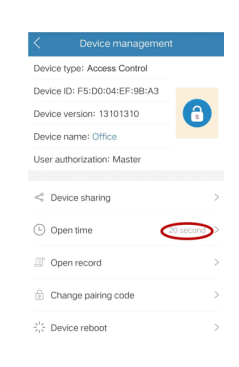
Click ">" to set open time (default is 5s)
Open time can be set as "1-99s" or "relay configuration" (means Toggle Mode)
You will hear 2 beeps once set successfully.



Pic. 23



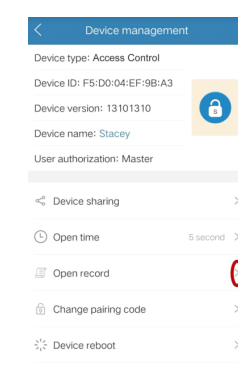
Pic. 24



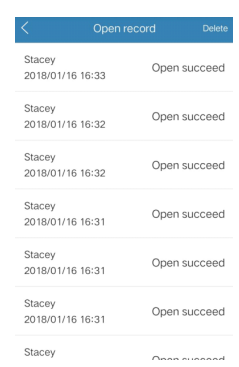
Pic. 25

4.4 Open Record

Note: Can only check your own mobile open record

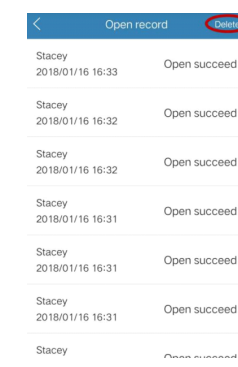


Pic. 26

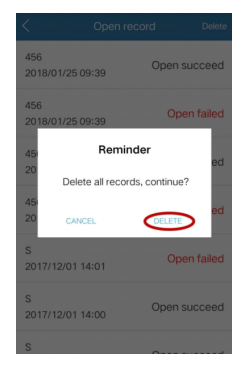


Pic. 27

4.4.1 Delete Record



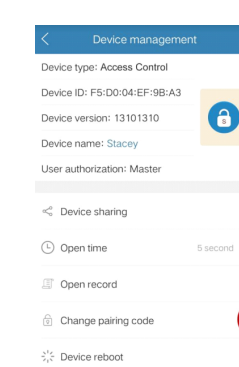
Pic. 28



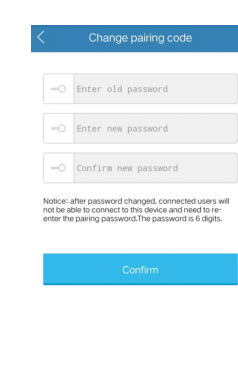
Pic. 29

4.5 Changing Pairing Code

The Master cannot limit one certain user's access authorization, the only method is to change the pairing code; however, after pairing code changed, all the common users can't open the door unless input the new pairing code (as Pic. 32). Please think twice when operating this step.
Pairing Code: can be any 6 digits only.

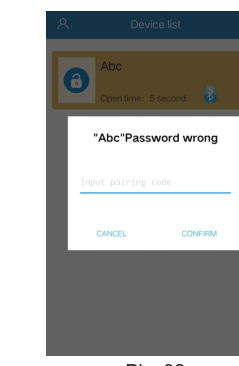


Pic. 30



Pic. 31

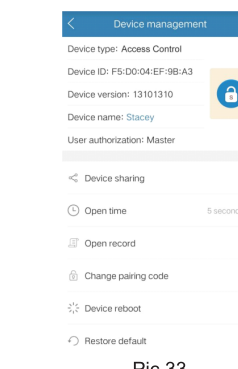
After Master changed the pairing code, all the common users are required to input the correct pairing code, like below:



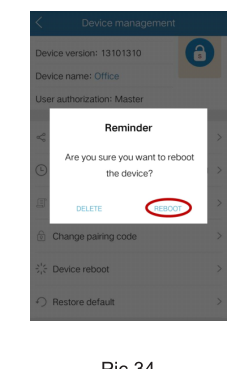
Pic. 32

4.6 Device Reboot

Device reboot will only reboot the Bluetooth module, will have no effect to the hardware.



Pic. 33

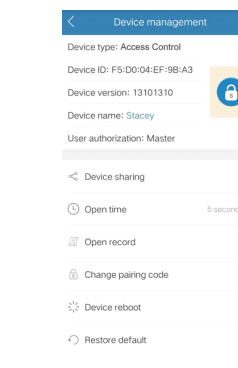


Pic. 34

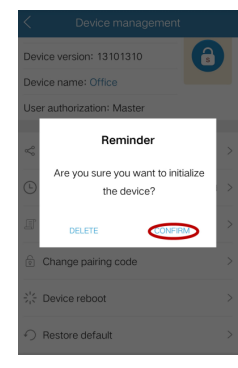
4.7 Restore Default

Restore default will delete all APP users, including the Master, please be careful with this step.

Two methods to restore default:
Method 1: By APP



Pic. 35

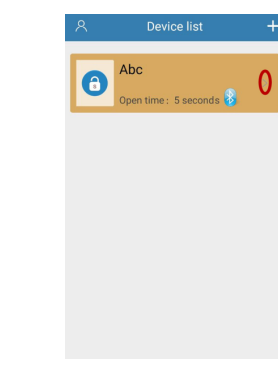


Pic. 36

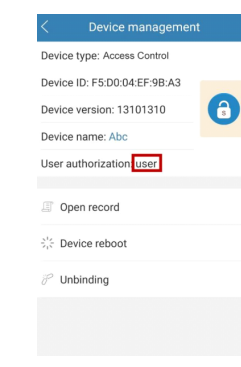
Method 2: By device
press the exit button for 30s until hear 2 beeps, which means restore to factory default successfully.

5. Device Management (For Common Users Only)

Click ">" on the right to enter device management



Pic. 37



Pic. 38

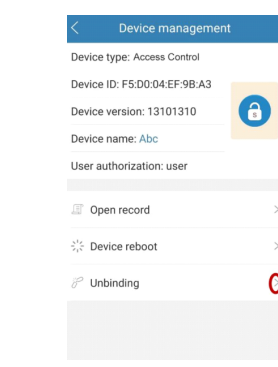
5.1 Device Name (Same as Master, refer to 3.1)

5.2 Open Record (Same as Master, refer to 3.4)

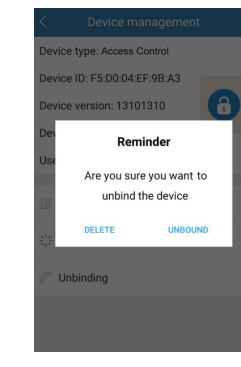
5.3 Device Reboot (Same as Master, refer to 3.6)

5.4 Unbinding

After unbinding the device, the user has no right to access the door unless add device again



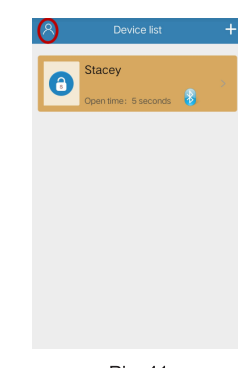
Pic. 39



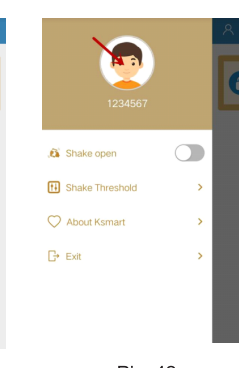
Pic. 40

6. Personal Center

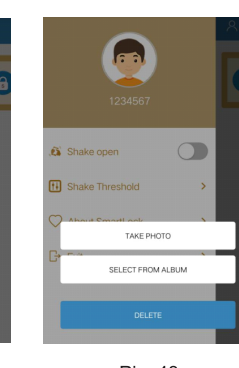
The head portrait can be changed.
Enter personal center and click the head portrait to change it.



Pic. 41



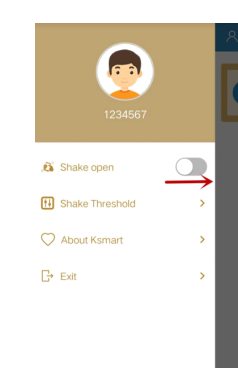
Pic. 42



Pic. 43

6.1 Shake Open

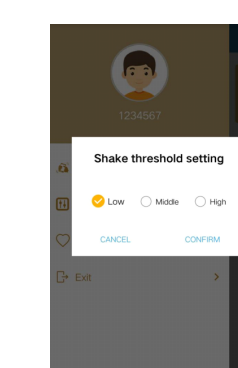
Slide to turn on Shake Open.
It works no matter screenlight is on or off (for Android only);
it works only when you enter into the APP (for iOS).



Pic. 44

6.2 Shake Threshold (For Android only)

You can set the sensitivity of Shake Open as per your own requirements.



Pic. 45

6.3 Home (For iOS only)

Slide to turn on Home.
It's used as a "back" menu here.

6.4 Auto Open (For iOS only)

This option is not valid for the moment.

Simplified Instruction	
Function Description	Operation
1.Register	Account: any 7-12 digits Password: 6-16 characters (Mix with numbers, letters and symbols)
2.Add device	1) Click "+" on the top right corner 2) Scan QR code (Ask Master to share QR code)
3.Release the door	Tap the device