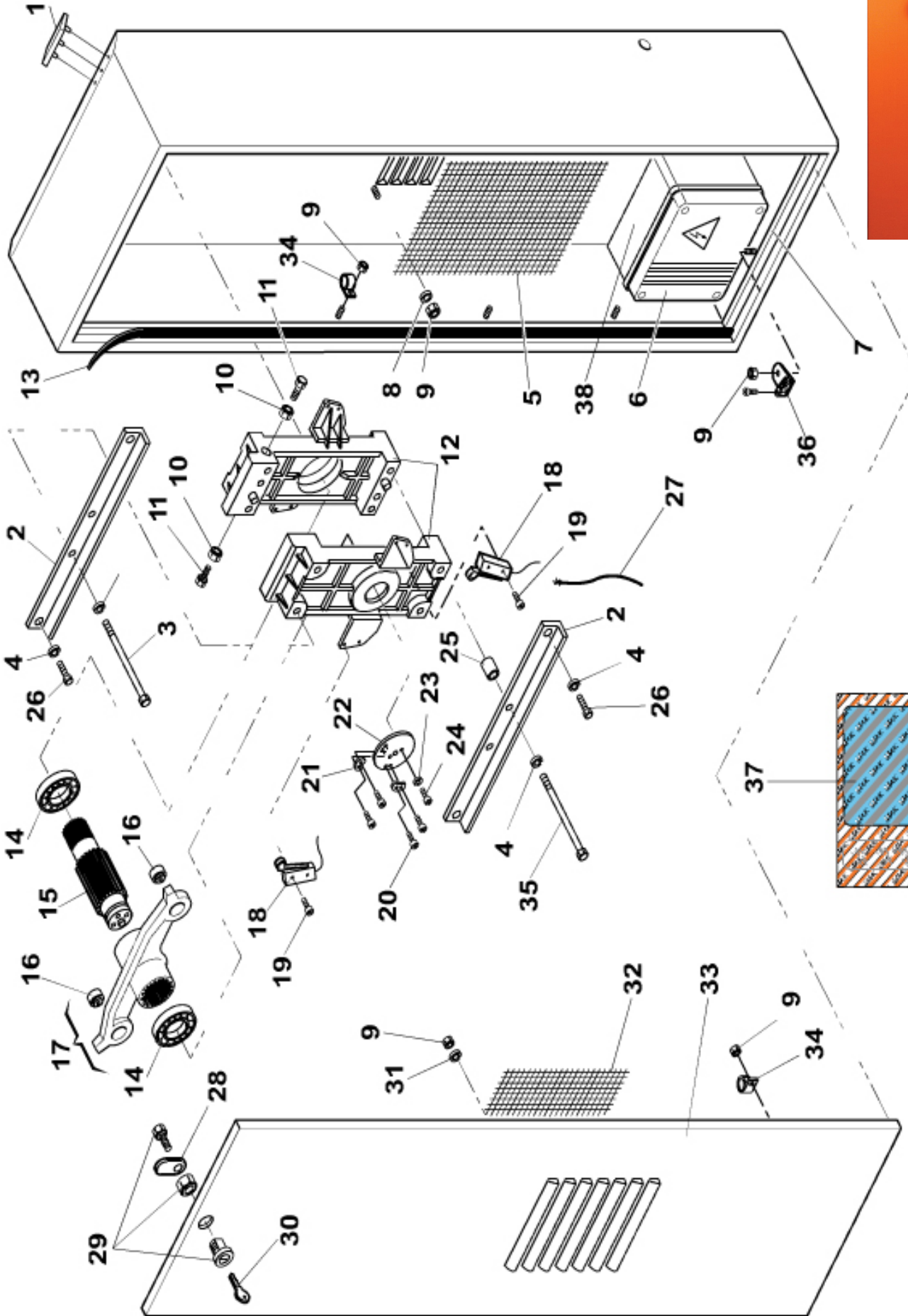
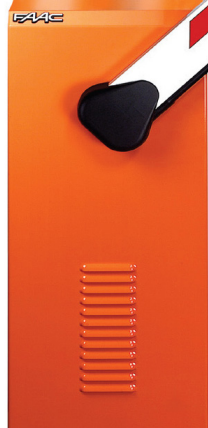


# B620 standaard Slagboomopener Onderdelen te bestellen op [www.stedaparts.nl](http://www.stedaparts.nl)

Ga naar de B620 standaard slagboomopener op [www.stedaparts.nl](http://www.stedaparts.nl) en selecteer bij de selectieopties het juiste onderdeel



## B620 standaard Slagboomopener Onderdelen te bestellen op [www.stedaparts.nl](http://www.stedaparts.nl)

| Pos. | Code      | Q.ty  | Description                             |
|------|-----------|-------|---|
| 0    | 620       |       | 620 STANDARD BARRIER                    |
| 001  | 7270115   | 1     | FAAC LOGO                               |
| 002  | 7224125   | 2     | BRACKET FOR DRIVE UNIT 620 L 262        |
| 003  | 7019255   | 2     | Yellow galvanized screw                 |
| 004  | 703109    | 8     | GROWER WASHER 10 1751 Z G               |
| 005  | 7340085   | 1     | PROT. NET FILTER 130X280                |
| 006  | 2022715   | 1     | 624BLD CONTROL UNIT                     |
| 007  | 416004    | 1     | 620 R.1 HOUSING UNIT                    |
| 008  | 703101    | 4     | WASHER GROWER 4 1751 Z                  |
| 009  | 702003    | 16    | NUT ES. 4 5587 6S Z                     |
| 010  | 702205    | 2     | DADO ES.10 5589 5S Z G                  |
| 011  | 7019285   | 2     | Beam travel adjusting screw             |
| 012  | 499460    | 1     | DIE-CAST FLANGE UNIT BARR.LEVEL SUPPORT |
| 013  | 7094025   | 2.365 | AERSTOP GASKET 10X3                     |
| 014  | 707016    | 2     | CUSCINETTO 6007 2RS1(35-62-14)          |
| 015  | 7183605   | 1     | 620 W/NEW POCKET SPLINE SHAFT           |
| 016  | 7073015   | 2     | BALL JOINT INA GE 12 UK DIN 648         |
| 017  | 416003    | 1     | 620-640 BALANCING LEVER+JUNCTION        |
| 018  | 7580145   | 2     | MATSUSHITA ABV161661 MICROSWITCH        |
| 019  | 701471    | 4     | Autoformante 3 x 16 8112 c15 z          |
| 020  | 701002    | 4     | CAP SCR.SOCK.HEA.4X10 5931 8GZ          |
| 021  | 7223245   | 2     | Beam microswitch cams                   |
| 022  | 7310345   | 1     | FIXING DISK CAMME 620                   |
| 023  | 703103    | 2     | GROWER WASHER 6 1751 Z                  |
| 024  | 701700    | 2     | TBCE 6X10 ISO 7380 Z                    |
| 025  | 7260095   | 2     | Spacer                                  |
| 026  | 701143002 | 4     | TE 10X 20 5739 8G Z G                   |
| 027  | 7510325   | 1     | LIMIT SWITCH CABLE FOR 620/640          |
| 028  | 7291015   | 1     | LEVER A7O 0090 620-630-640              |
| 029  | 7120505   | 1     | LOCK ART.3890 DRAWING                   |
| 030  | 7131005   | 1     | KEY MOD. 3889.0913                      |
| 031  | 703005    | 5     | WASHER 4 6592 R40 Z CAT.A De9           |
| 032  | 7340005   | 1     | PROTECTION FILTER NET GRID 160x180      |
| 033  | 7270645   | 1     | 620 R.1 HOUSING COVER                   |
| 034  | 777018    | 9     | FISSACAVO RICHCO WHC-750-01             |
| 035  | 701137001 | 2     | TE 10X140 5737 8G Z G                   |
| 036  | 7770215   | 1     | Cable clamp type                        |
| 037  | 39051385  | 1     | Skinpack package barrier without pocket |
| 038  | 419401    | 1     | 620/640 ELECTRONIC UNIT BOX             |